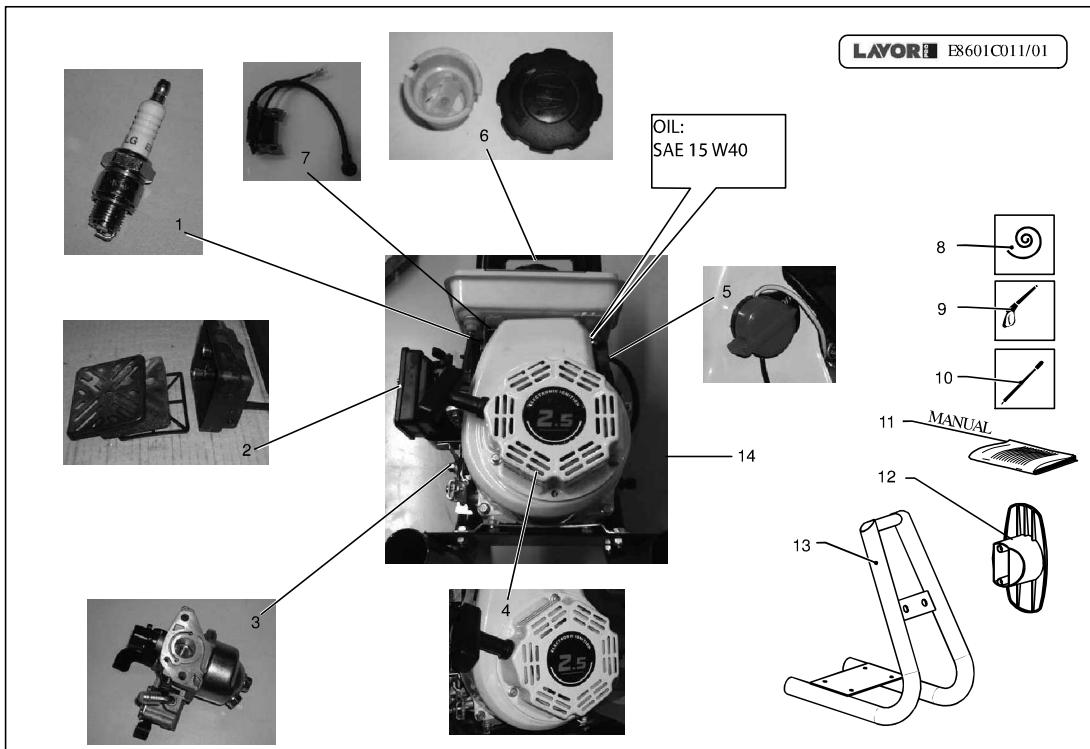


LAVOR E8601C011/01

OIL:  
SAE 15 W40



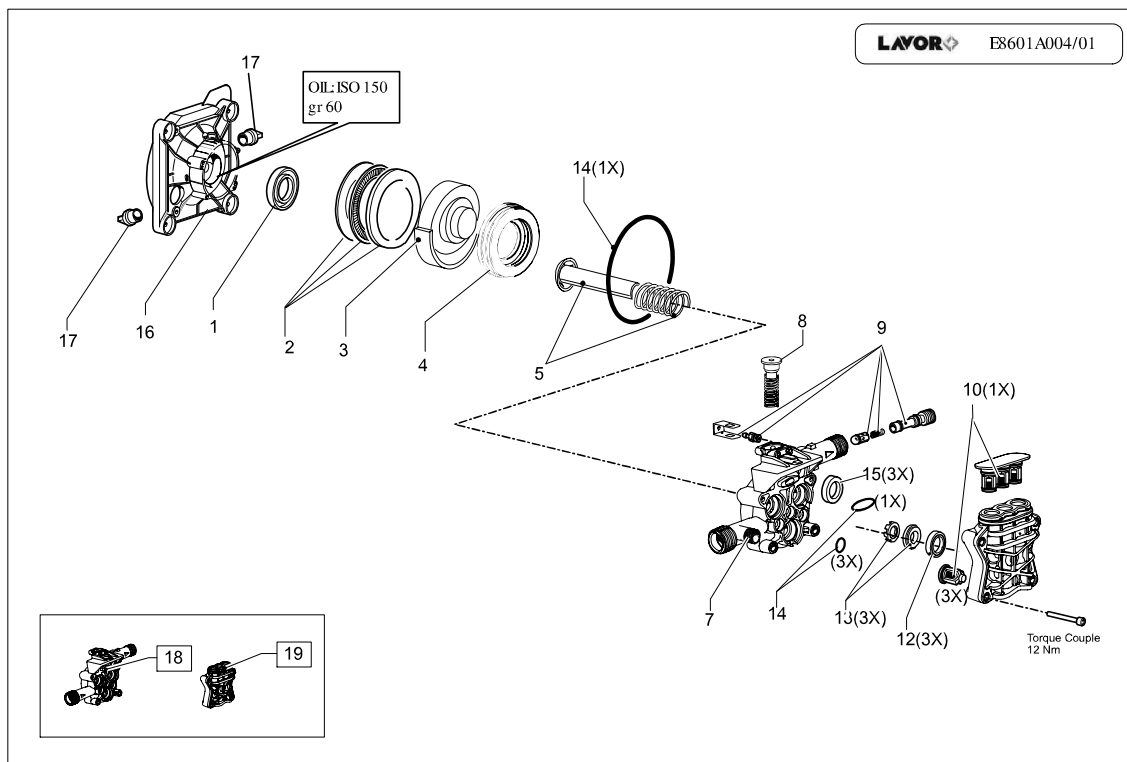
**LAVORWASH**  
**SERVICE**

## ERSATZTEILLISTE

Code R86010103-2  
Beschreibung MOTOR

Anfangsdatum 2/12/2008  
Schlussdatum 1/1/3000  
Tafel E8601C011-01

Pos.	Code	Preis	Menge pro	Menge.	Beschreibung	Alternative	Preis	M	P
001	3.650.0019	10.5	2	1	CANDELA MOTORE 154F-2,5HP (rif.34200)		0	0	0
002	6.605.0095	20	1	1	KIT FILTRO ARIA MOTORI 154F-2,5HP		0	0	0
003	3.650.0020	25	1	1	CARBURATORE 154F-2,5HP (rif.16100)		0	0	0
004	3.650.0024	20	1	1	KIT AVVOLGENTE MOTORE 154F-2,5HP (rif.27300)		0	0	0
005	3.650.0015	20	1	1	INTERRUTTORE MOTORE 154F-2,5HP168F-5,5HP (rif.35410)		0	0	0
006	6.605.0094	20	1	1	KIT TAPPO+FILTRO GASOLIO MOTORI 154F-2,5HP		0	0	0
007	3.650.0022	20	1	1	BOBINA D'ACCENSIONE MOTORE 154F-2,5HP (rif.34500)		0	0	0
008	4.018.0051	22.5	1	1	TUBO 1/4 140BAR L=5000 1/4F.+D.15 ESP.03		0	0	0
009	6.001.0067	32.55	1	1	PISTOLA S'01 -EU- INTERM.PERNOGIALLO RAL.1018 PANT.108	6.001.0070	20	1	0
010	6.002.0213C	14.63	2	1	LANCIA S'99 1,25 FISSA (BIANCO) L=46cm ESP.00		0	0	0
011	7.100.1408	22.5	1	1	LIBRETTO ISTRUZIONI THERMIC 2,5 LWS 76F A5 10L REV.04		0	0	0
012	4.008.0789	20	1	1	SCHLAUCHWICKLER TIGER-MACH ESPP.00 1 02		0	0	0
013	5.013.0055	55.62	1	1	TELAIO COMPLETO TH 2.5 ESP.02		0	0	0
014	3.600.0026	152	1	1	MOT.SCOP.LIFAN INT.PT03ORIZ2,5HP-154 ALB.S/LING.CH.65mm -G-		0	0	0



**LAVORWASH**  
**SERVICE**

## ERSATZTEILLISTE

Code R50090001-2  
Beschreibung BODY PUMP

Anfangsdatum 2/12/2008  
Schlussdatum 1/1/3000  
Tafel E8601A004-01

Pos.	Code	Preis	Menge pro	Menge e.	Beschreibung	Alternative	Preis	M
001	3.650.0001	20	1	1	ANELLO TENUTA OLIO 17X30X6 MOTORE 154F-2,5HP (rif.13180)		0	0
002	6.005.0021	20	1	1	KIT 24 LAVOR		0	0
003	4.005.0265	20	1	1	PIATTELLO 9GR30'TH FL.INT.C/PT'03 ORIZZ.X ALB.S/LING.ESP.01		0	0
004	4.007.0328	20	1	1	CUSCINETTO REGGISPINTA A SFERE35X55X12 PER PT'03 ESP.03		0	0
005	6.005.0225	29.42	1	1	KIT 208 PISTONI ACCIAIO FERMOTORN.+MOLLE		0	0
007	3.106.0021	11.5	2	1	VALVOLA TERMICA PER CORPO GUIDA PT'03 1/4 NPT C/TAPPO 60°C	3.106.0023	10.14	3
008	5.009.0647	20	1	1	ASSIEME VALV.COMP. S/TS X PT'03 ALLUM. M.13KG		0	0
009	6.005.0210	11.46	2	1	KIT 193 LW ASSIEME VALVOLA DIRITEGNO + PORTAG.CIECO PT'03		0	0
010	6.005.0184	10	2	1	KIT 170 LW VALV.ASP./MAND.PT'03		0	0
012	6.005.0133	10	2	1	KIT 124 ANELLI TENUTA ACQUA PARTNER D.12		0	0
013	6.005.0134	10	2	1	KIT 125 LW ANELLI APP.TENUTAOTTONE + DISTANZIALI PT D.12		0	0
014	6.005.0226	20	1	1	KIT 209 O-RING PER PT'03		0	0
015	6.005.0079	11	2	1	KIT 79 LW ANELLI TENUTA OLIOX PARTNER D.12/FIBRA		0	0
016	4.005.0248	34.5	1	1	FLANGIA X MOT.THERMIC ORIZZONTALE 2,5HP (rif.152F) -C-ESP.0		0	0
017	6.605.0093	34.5	1	1	KIT TAPPI OLIO MOTORI 154F-2,5HP/168F-5,5HP		0	0
018	5.007.0223	65.63	1	1	CORPO GUIDA PT'03 C/VALV.TERM.1/4 S/ASP.- MOLLA 13KG (THERMI		0	0
019	5.008.0182	20	1	1	ZYLINDERKOPF PARTNER '03 D.121 30		0	0