

# LISTA RICAMBI

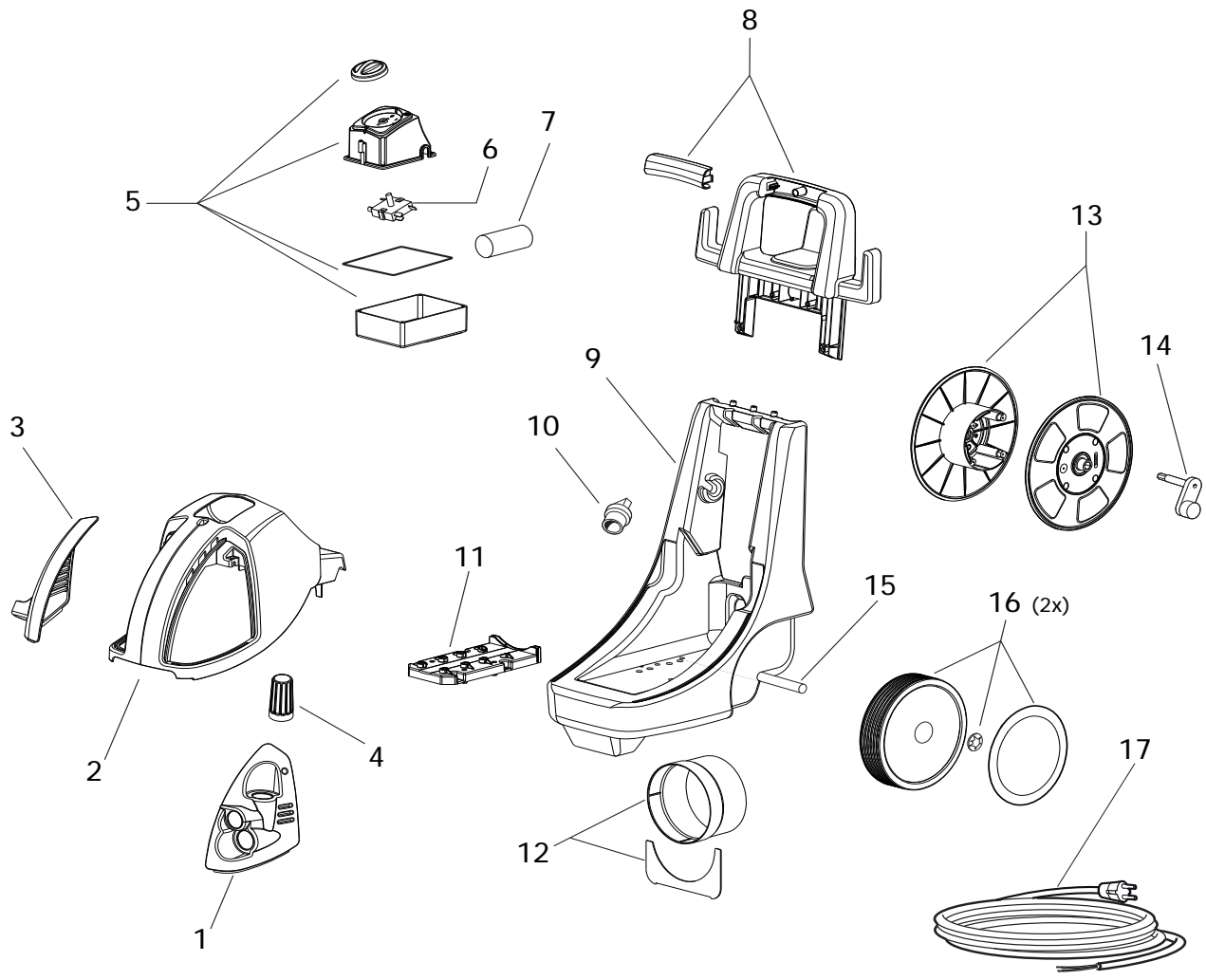
CODICE: 8.666.0001      REV.: 1      DESCRIZIONE: IDRO CALIFORNIA 1109LP 230/50 -G- TS LWS  
(SP.SCHUKO)








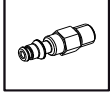

DATA INIZIO VAL.: 08/05/2011      DATA FINE VAL.: 01/01/3000

CODICE GRUPPO: R56010524C      REV.: 1      DESCRIZIONE: MTP.LW 230/50 2P LP1210 C/INIETT. C/TS SCAT. EL. LATO  
SUPER.

DATA INIZIO VAL.: 08/06/2011      DATA FINE VAL.: 01/01/3000      N. TAVOLA: E56010035/01

CODICE:	DESCRIZIONE:	QTA':	POS:	RIF1:	RIF2:
5.601.0524C	MOTORPUMP.LW 230/50 2P LP1210 W/INJECT. W/TS	1	00		
4.605.0108	HEAD LP 1210 (P56.0377)	1	01		
5.609.0254	BOX-MICRO-2X1,5 CABLE ASSEMBLY WITH PLUG HOLE FOR OMNIA 12	1	02		
6.005.0335	KIT 307 INJECTOR 1,8	1	03		
5.609.0154	KIT HOLDER RUBBER WITH ORING AND SPRING	1	04		
6.005.0330	KIT 302 VALVE FOR TPBH '10 HEAD	1	05		
6.005.0336	CAP FOR SUCTION VALVE	1	06		
6.005.0331	BUSHING FOR TPBH '10 HEAD	1	07		
6.005.0133	KIT 124 O-RING WATER SEAL PARTNER D.12	1	08		
6.605.0147	KIT BY PASS W/TS	1	09		
6.005.0079	KIT 79 LW OIL SEALS	1	10		
4.605.0109	CARTER LP 1210 (P56.0377)	1	11		
4.605.0110	BACK COVER LP 1210 (P56.0377)	1	12		
6.605.0156	KIT COMPONENTS CARTER FOR PUMP LP1210	1	13		
6.605.0155	KIT PISTON + PIN + PISTON ROD FOR PUMP LP1210 (3PCS)	1	14		
4.607.0622	PUMP SHAFT LP 1210 (P56.0377)	1	15		
3.001.0030	RADIAL	1	16		
5.006.0211	MOTOR D.125 h90 230/50 2P W/TERM. FOR PUMP LP1210	1	17		
6.605.0154	KIT FAN + RING + FAN FOR PUMP LP1210	1	18		
3.099.1616	FAN COVER FOR MOTOR D.125 - PUMP LP1210	1	19		
5.006.0211	MOTOR D.125 h90 230/50 2P W/TERM. FOR PUMP LP1210	1	20		
5.609.0257	PISTON BOBY GUIDE ASSEMBLY PUMP 2800rpm LP1210	1	21		
5.008.0250	LP1210 HEAD 3/4 INLET-.M22 OUTLET WITH SUCTION (ALUM.)	1	22		



- 18 — 
- 19 — 
- 20 — 
- 21 — 
- 22 — 
- 23 — 
- 24 — 
- 25 — 
- 26 — 

# LISTA RICAMBI

CODICE: 8.666.0001 REV.: 1 DESCRIZIONE: IDRO CALIFORNIA 1109LP 230/50 -G- TS LWS (SP.SCHUKO)

DATA INIZIO VAL.: 08/05/2011 DATA FINE VAL.: 01/01/3000

CODICE GRUPPO: R86660001 REV.: 1 DESCRIZIONE: CHASSIS

DATA INIZIO VAL.: 08/05/2011 DATA FINE VAL.: 01/01/3000 N. TAVOLA: E8666C001/01

CODICE:	DESCRIZIONE:	QTA':	POS:	RIF1:	RIF2:
4.613.0338	LEFT FRONT COVER FOR 2P PUMP LMX LP -GREY- RAL.7046		01		
4.613.0334	UPPER HOUSING LMX LP -YELLOW- RAL.1018	1	02		
4.613.0335	RIGHT FRONT COVER CLOSED LMX LP -GREY- RAL.7046(PANT.430C)	1	03		
6.605.0161	KIT EXTENSION FOR PRESSURE ADJUSTING KNOB FOR OMNIA HEAD	1	04		
6.605.0158	KIT ELETTR. BOX +KNOB FOR ROTATIVE SWITCH+ GASKET FOR ARIZONA/CALIFORNIA	1	05		
3.401.0202	ROTARY SWITCH TWO GEARS BIPOLAR 16A (0-1)	1	06		
3.404.0016	CAPACITOR 45 mF 450V D.45X90 WITHOUT CABLE FASTON M	1	07		
6.605.0157	KIT HANDLE + COVER FOR ARIZONA/CALIFORNIA	1	08		
4.008.0493	BLACK INFERIOR CASE LMX-EAGLE	1	09		
3.099.0122	TANK CAP LMX FOR EAGLE	1	10		
4.608.0414	MOTOR SUPPORT FOOT LMX LP -BLACK-	1	11		
6.605.0159	KIT FAN + MOTOR BULKHEAD FOR CALIFORNIA	1	12		
6.605.0160	KIT HALF HOSE REEL DX+SX FOR ARIZONA/CALIFORNIA	1	13		
5.012.0060	HANDLE + SCREW	1	14		
4.007.0224	EAGLE WHEEL AXLE D.20	1	15		
6.605.0018	WHEELS KIT + STUDSD.250	1	16		
4.012.0150	CABLE H05VV-F 3X1,5 MT.5,4 F/F SCHUKO PLUG	1	17		
6.001.0089	GUN S'10Y WITH QUICK CONNECTION AND M22	1	18		
4.618.0128	HIGH PRESSURE HOSE 200bar D.15 L.8000	1	19		
6.002.0322	METAL LANCE NOZZLE HOLDER QUICK COUPLING-M22	1	20		
6.602.0040	TURBO LANCE L.500 M.22 045	1	21	OPT.	
6.602.0035	M22 PROFESSIONAL FIXED BRUSH	1	22	OPT.	
6.603.0004	M22 ROTARY BRUSH	1	23	OPT.	
5.012.0282	5 NOZZLES KIT OF D.1,2 FOR QUICK JOINT GR.0-15-25-40FOAM	1	24		
5.009.0751	ADAPTER FOR GUN S'09 1/4 +OR	1	25		
3.100.0405	TRANSPARENT QUICK COUPLING INLET CONNECTOR WITH INSPECTIONABLE FILTER	1	26		